



ACSS1 (Acetyl-K642) Polyclonal Antibody

Catalog No	YP-Ab-04409
Isotype	IgG
Reactivity	Human:K642;Mouse:K635;Rat:K635
Applications	WB;ELISA
Gene Name	ACSS1 ACAS2L KIAA1846
Protein Name	ACSS1
Immunogen	Synthesized Acetyl peptide derived from human ACSS1. at AA range: K642
Specificity	This antibody detects endogenous levels of ACSS1 at Human:K642;Mouse:K635;Rat:K635, It doesn't react with total protein.
Formulation	Liquid in PBS containing 50% glycerol, 0.5% BSA and 0.02% sodium azide.
Source	Polyclonal, Rabbit,IgG
Purification	The antibody was affinity-purified from rabbit antiserum by affinity-chromatography using epitope-specific immunogen.
Dilution	Western Blot: 1/500 - 1/2000. ELISA: 1/20000. Not yet tested in other applications.
Concentration	1 mg/ml
Purity	≥90%
Storage Stability	-20°C/1 year
Synonyms	Acetyl-coenzyme A synthetase 2-like, mitochondrial (EC 6.2.1.1) (Acetate--CoA ligase 2) (Acetyl-CoA synthetase 2) (AceCS2) (Acyl-CoA synthetase short-chain family member 1)
Observed Band	
Cell Pathway	Mitochondrion matrix .
Tissue Specificity	Amygdala,Brain,PCR rescued clones,Placenta,Spleen,Stomach,T
Function	catalytic activity:ATP + acetate + CoA = AMP + diphosphate + acetyl-CoA.,function:Converts acetate to acetyl-CoA so that it can be used for oxidation through the tricarboxylic cycle to produce ATP and CO(2).,sequence caution:Sequencing errors.,similarity:Belongs to the ATP-dependent AMP-binding enzyme family.,
Background	This gene encodes a mitochondrial acetyl-CoA synthetase enzyme. A similar protein in mice plays an important role in the tricarboxylic acid cycle by catalyzing the conversion of acetate to acetyl CoA. Alternatively spliced transcript variants encoding multiple isoforms have been observed for this gene. [provided by RefSeq, Nov 2011],



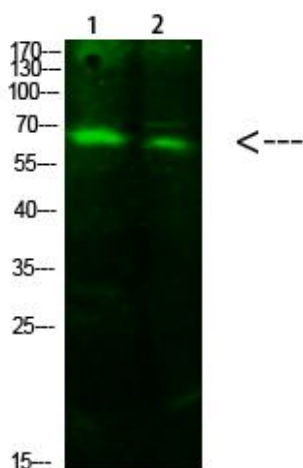
matters needing attention

Avoid repeated freezing and thawing!

Usage suggestions

This product can be used in immunological reaction related experiments. For more information, please consult technical personnel.

Products Images



Western Blot analysis of 1,293T 2,hela cells using primary antibody diluted at 1:1000(4°C overnight). Secondary antibody:Goat Anti-rabbit IgG IRDye 800(diluted at 1:5000, 25°C, 1 hour)